

The logo for the Promate 120 Powerstation. It features a red curved line above the text "Promate® 120 Powerstation". The text "Promate" is in a bold, italicized sans-serif font, "120" is in a bold sans-serif font, and "Powerstation" is in a bold sans-serif font.

# Promate® 120 Powerstation

## Owner's Manual

### INTRODUCTION

This product has been carefully engineered and manufactured to give you dependable operation. Please read this manual thoroughly before operating your new product as it contains the information you need to become familiar with its features and obtain the performance that will bring you continued enjoyment for many years. Please keep this manual on file for future reference.

### TABLE OF CONTENTS

I. Important Safety Instructions.....	1
II. Specifications.....	2
III. Charging the Powerstation.....	3
IV. Battery.....	5
V. Operating as a Power Supply.....	5
1.1 Introduction.....	5
1.2 Operating Instructions.....	6
VI. Maintenance Instructions.....	8
VII. Moving and Storage Instructions.....	8
VIII. Troubleshooting Guide.....	9
IX. Service Information.....	11
Powerstation Exploded View.....	12

## I. IMPORTANT SAFETY INSTRUCTIONS

1. To reduce risk of injury, charge only with the provided AC adaptor and charging cord. Other chargers may cause battery to burst causing injury to persons and damage.
2. Do not expose the Promate chargers to rain and moisture.
3. Use of accessories not recommended or sold by the manufacturer may result in a risk of fire, electric shock, or injury to persons.
4. To reduce the risk of damage to the cigarette lighter connector and cord, do not drag the cord when disconnecting.
5. Make sure the cord is safe from being stepped on, tripped over, or otherwise subjected to damage or stress.
6. Do not operate the charger with damaged cord or cigarette lighter connector - replace it immediately.
7. Do not operate the Powerstation if it is damaged in any way; Report it immediately to an authorized Promate service provider or dealer.
8. Do not disassemble the Powerstation or its charger; ask help from a service or repair technician authorized by Promate. Incorrect reassembly may result in a risk of electric shock or fire.
9. To reduce risk of electric shock, unplug charger before attempting any maintenance or cleaning.
10. Always correctly orient the Powerstation in the upright position.
11. Do not expose the device to direct sunlight, high temperature (>35°C) or extreme cold (<0°C).
12. Keep it away from dust and dirt.
13. Warning – Risk of explosive gases.
  - a. Working in vicinity of a lead-acid battery is dangerous. Batteries generate explosive gases during normal battery operation. For this reason, it is of utmost importance that each time you use your Powerstation, you read this manual and follow the instructions exactly.
  - b. Do not expose the Powerstation or battery to fire or intense heat as it may explode.
14. Personal Precautions
  - a. Never smoke or allow a spark or flame in the vicinity of battery or engine.
  - b. Use the Powerstation on a 12-volt LEAD-ACID battery only. Do not connect to a 6-volt or 24-volt battery system. Use the DC outlet socket to operate 12-volt appliances equipped with a cigarette lighter plug.
  - c. If battery acid comes in contact with skin, rinse immediately with running water, then wash thoroughly with soap and water. If redness, pain or irritation occurs, seek immediate medical attention.
  - d. If battery acid comes in contact with eyes, flush eyes with water immediately - for a minimum of 10 minutes - seek immediate medical attention.

## II. SPECIFICATIONS

### GENERAL SPECIFICATIONS:

**Dimension(cm):** 24.7 x 16.3 x 25

**Gross Weight:** 5.4 kgs

#### Output:

Two (2) 12V DC outlet

AC inverter

5V USB outlet

#### Charging:

Car – DC charging port

AC – charging port

Solar charging port

**Built-in Battery:** 12V, 12Ah sealed lead acid battery

### INVERTER SPECIFICATIONS:

Output Power Continuous: 200W

Operating Voltage: DC 11-14.5V

AC Output Voltage (RMS Meter): 220V  $\pm$ 10%

Output Wave Form: Filtered Modified Sine Wave Low

Battery Alarm: DC 10.3V  $\pm$  0.3V

Low Battery Shut Down: DC 8.5V  $\pm$  0.3V

Frequency: 60 Hz  $\pm$  3

Efficiency: 85%

No Load Current Draw: < 0.65A

Over Temperature Protection: 100°C  $\pm$ 10%

### LOCATION OF CONTROL

1. Rubberized handle
2. Digital display
3. AC charging port
4. Solar charging port
5. Two (2) 12V power outlet
6. 3 x 5V 2.1A USB outlet
7. Inverter/USB power switch
8. AC power outlet
9. Front LED light
10. LED light switch
11. Charging LED indicator



### III. CHARGING THE POWERSTATION

**NOTE:** Powerstation must be fully charged for 24 hours before first use. Failure to do so may permanently damage battery.

#### TO READ THE POWERSTATION'S BATTERY VOLTAGE / INVERTER STATUS

1. Press the "ON" switch button of the power inverter
2. Press test button to read the Power Inverter / Battery Voltage status

"VAC" – Output AC Voltage

"Hz" – Output AC frequency

"Watt" – Power consumption of the device

"VDC" – Battery voltage of Powerstation

3. Recharge the unit when "VDC" reads < 12V
4. Switch Power inverter to "OFF" before recharging the unit.

#### CAUTION

This unit has a maintenance free, built-in sealed lead acid battery. Although the Powerstation arrives partially charged from the factory, it must be fully charged for 24 hours before first use, even if the digital meter indicates "VDC" battery voltage >12.8V, the battery is full. This initial charge pre-conditions of the battery are necessary. Failure to follow this procedure may permanently damage the battery.

#### CHARGING WITH AC ADAPTOR

1. Keep all power on/off switches in OFF position while charging.
2. Completely charge your Powerstation before using it for the first time.
3. Press test button to check battery voltage "VDC", if battery voltage reads <12V, it is necessary to recharge the Powerstation immediately for smooth running.
4. Before recharging from an AC outlet, be sure the source is right. (i.e. 110 volts or 230 volts)
5. Use only the chargers provided with unit.
6. Plug the AC charging cord into any standard wall outlet and the other end into the AC/DC charging input socket. The RED LED will illuminate which indicates the unit is charging and will turn into GREEN LED when unit is fully charged.

**First time charge:** .....24 hours

**Recharge and subsequent charges:** .....UNTIL CHARGING LED LIGHT TURNS GREEN

## CHARGING WITH DC ADAPTOR

Due to safety circuits built into the input-charging jack, DC charging through this port will not fully charge the battery.

1. Keep all power switches in OFF position while charging.
2. Insert DC adapter plug into charging port of the Powerstation and the other end into the cigarette lighter socket of your vehicle. The RED LED will illuminate which indicates the unit is charging. Vehicle should be running for full charging to take place.

**NOTE:** This method allows battery to be topped up during a journey but may not fully charge the unit. Disconnect charging cord before turning off engine. NEVER leave vehicle running in an enclosed or poorly ventilated space.

## CHARGING WITH SOLAR PANEL

1. Keep all power switches in OFF position while charging.
2. Select a solar panel with 30-Watt maximum output
3. Connect the solar panel to the solar charging port of the Powerstation and the other end into the solar panel. The RED LED will illuminate which indicates the unit is charging and will turn GREEN LED when unit is fully charged.

## CHARGING TIPS AND WARNINGS

- Keep battery charged, ready for emergencies. Unlike some rechargeable batteries, frequent charging will not harm and in fact, will improve the performance of the internal battery.
- Recharge battery as soon as possible after each use to prolong battery life.
- Frequent heavy discharges between recharging will reduce battery life.
- Do not leave the Powerstation in a total discharged state for an extended period of time as this can cause battery failure.
- All lead acid batteries suffer from self-discharge over time, especially under extreme temperatures.
- Store in a cool dry place.
- RECHARGE EVERY MONTH WHEN NOT IN USE.
- Do not continuously charge the Powerstation for more than 30 hours.
- Use only the charging adaptors provided with this unit.
- DO NOT OPERATE THE UNIT WHILE CHARGING.

## IV. BATTERY

### CHECKING THE BATTERY STATUS

Press the power inverter button to turn on the LED display, then press the display button repeatedly to display the internal battery voltage value – VDC.

1. 12.8V “VDC” indicates full charge
2. <12V “VDC” indicates it should be charged as soon as possible. It will be able to operate the AC appliance, LED light, phone accessories, and most 12-volt accessories for a limited time. Do not let the battery drained as it may damage the battery.
3. <11V “VDC” indicates the battery is low and usage must be discontinued immediately. Recharge battery as soon as possible and before further use.

### BATTERY SPECIFICATION

This unit is equipped with a 12-volt 12-ampere-hour maintenance free, sealed lead acid rechargeable battery, which has a normal life expectancy of up to 500 charging cycles and will give many years of dependable service if properly cared for following the directions above. In the event that the battery needs replacement in the future, the unit will need to be opened up; this service should be performed by a qualified service technician. Replacement batteries may be purchased from an electrical supply store. Old batteries should be disposed of properly and safely. Please contact your local solid waste authority for recycling information.

## V. OPERATING AS A POWER SUPPLY

The Promate 120 is capable of supplying power for 220V AC household devices and 12V DC devices up to the rated capacity of the unit. The length of time the product will operate depends on the condition of the battery and the current draw of the appliance. Low wattage appliances can be operated for several hours while higher wattage products will operate for less time.

### 220V AC SOCKET

#### 1.1 Introduction

The Powerstation is equipped with a 200-Watt power inverter that converts the power from the internal battery to standard 220-Volt AC household power. The power inverter supplies 200 watts of continuous power. When you turn on an appliance or a tool that operates using a motor or tubes, it requires an initial surge of power to start up. This surge of power is referred to as the “starting load” or “peak load”. Once started, the tool or appliance requires less power to continue to operate. This is referred to as the “continuous load” in terms of power requirements.

You will need to determine how much power your tool or appliance requires to start up and how much power it requires for continuous running. Power consumption is rated in watts.

Multiply: AMPS X 220 (AC voltage) = WATTS

This formula yields a close approximation of the continuous load of your appliances.

Multiply: WATTS x 2 = Starting Load

This formula yields a close approximation of the starting load of your appliances.

Most often the start-up load of the appliance or power tool determines whether the inverter has the capability to power it.

### **CAUTION**

Know the wattage requirement of your appliances. Use only those appliances that do not exceed the capacity of this unit. The output waveform of this inverter is a MODIFIED SINE WAVE. It has a total harmonic distortion of 28% and maximum single harmonic of 18%. If you choose to measure the AC output voltage, you must use a TRUE RMS VOLTMETER such as a Fluke 8060A, Fluke 87, Triplet 4200, Beckman 4410 or any "True RMS" multimeter. Using any other type of voltage measuring device will result in an AC voltage reading of 20 to 30 volts lower than the rated value.

### **CAUTION**

Do not use this Powerstation with equipment that can be damaged by the inverter's modified sine wave output (non-sinusoidal) including (but not limited to) appliances with speed controllers (such as power tools). Metal halide arc (MHI) lights can be damaged.

**NOTE:** If you are unsure about powering any device with the inverter, contact the equipment manufacturer to determine the appliance's compatibility with the modified sine wave (non-sinusoidal) AC waveform. Some rechargeable devices are equipped with a separate charger, which can be connected into this inverter AC receptacle. However certain rechargeable devices are manufactured with built-in chargers (see device owner's manual). This category of devices may cause internal damage to inverters and should not be used with this inverter. The temperature of the device must be monitored for the first 15 minutes of operation. Abnormally elevated temperature of the device is an indication that they should not be used with this inverter.

## **1.2 Operating Instructions**

Before using the inverter, ensure that the battery of your Powerstation is fully charged. Place the inverter power switch in the on position. The digital display will come on to confirm that the AC outlet is powered. If the AC product you are operating has a power switch, we recommend that it be put in the "OFF" position. Plug product into the AC outlet and proceed to use according to the directions on the product. The Powerstation will operate most devices rated up to 200 watts. The AC power supply is equipped with a low battery alarm and an automatic shutdown feature to protect the unit if the battery power drops below the safe recharging level. If the alarm sounds while you are operating an AC product, shut off the device immediately and discontinue use until the Powerstation battery can be recharged. Switch inverter "OFF" and disconnect the AC product. Recharge battery

as soon as possible and before further use. If you ignore the warning alarm, the power supply will automatically shut down and your AC product will instantly lose power. The AC power supply function is also protected against overloads and overheating. If either of these conditions should occur, the power inverter will shut down automatically.

### **a. Operating a TV**

When operating a TV monitor or TV/DVD combo, please note that picture tubes have a degaussing coil, which uses a high initial surge of power to light up the screen from a “cold start”. If the TV does not start up on the first try, switch the TV on every 2-3 seconds until the screen comes on. Some screens may take 2-5 tries before starting.

### **b. Operating with an extension cord**

We recommend that you use an extension cord no longer than 16 AWG 50ft. between the AC output and AC appliance. A longer cord may result in reduced output.

## **USB PORT**

**NOTE:** Prior to connecting the accessory, make sure that the USB port ON / OFF power switch is in the OFF position. Accessory Connection (iPad, iPhone..., etc.)

1. Connect the USB interface cable (provided with the accessory) into the accessory and the Portable Powerstation USB port.
2. Press the USB Port On/Off switch of the unit to the ON position. Turn on the accessory for operation.
3. Press USB Port switch to OFF position when not in use.

**NOTE:** To avoid draining of the battery while using the USB port, kindly check time to time the battery voltage. And do not let it reach to <11V (below 11V). This will permanently damage the battery.

## **TWO (2) 12V DC PORTS**

The Powerstation is equipped with two (2) outlet sockets and can be used to operate most 12-volt auto accessories and appliances (11 AMP maximum) equipped with a cigarette lighter plug. Simply plug into the appliance. NOTE: Socket is live so appliance will be instantaneously powered. Length of time appliance will operate depends on the condition of battery and current draw of appliance. Periodically check battery voltage status “VDC” during operation and discontinue use immediately if battery condition falls to 11V.

Recharge unit as soon as possible and before further use.

12V DC PORT is protected by an internal circuit breaker to prevent damage to unit in case appliance has a short circuit or exceeds 11 AMPS. If circuit breaker is tripped, disconnect appliance and have it checked. Circuit breaker will automatically reset once it cools down (approx. 15-20 minutes).

**DO NOT PLUG A CIGARETTE LIGHTER INTO THE OUTLET OF THE POWERSTATION.**



### **FRONT LED WORKLIGHT**

1. Simply switch ON the LED work light by pressing the LED button.
2. To turn OFF the LED work light, press again the by LED button.

**NOTE:** To avoid draining of the battery while using the LED Light, kindly check time to time the battery voltage. And do not let it reach to <11V (below 11V). This will permanently damage the battery.

## **VI. MAINTENANCE INSTRUCTIONS**

All batteries discharge with time. AC recharge is recommended after each use or every three months when not in frequent use. Use the AC charger and charge for the recommended time, or until the LED lights turns to GREEN.

If the unit gets dirty, gently clean the outer surfaces with a soft cloth moistened with a mild solution of water and detergent. Do not use solvents or other chemical cleaners. Periodically inspect the condition of charging adapters, connectors, and wires. Replace any components that may have become worn or broken. These parts are not serviceable. Do not open or disassemble. Service on Power Station is confined to replaceable parts only. All other servicing should be performed by a qualified service technician only.

## **VII. MOVING AND STORAGE INSTRUCTIONS**

Turn OFF all power switches of the power station when not in use. Store in a cool, dry place.

### **Fuse Replacement – 12-volt adapter plug**

This 12-volt plug is fitted with a 2A fuse in the tip. Should the fuse need replacing, unscrew end cap and replace with a new 2A fuse.

### **CAUTION**

For continued protection against risk of fire, replace only with same type and rating of fuse.

### **WARNING! EXPLOSION HAZARD**

Do not expose battery to fire or intense heat as it may explode. Battery contains acid: if case should become cracked, dispose of immediately taking adequate safety precautions to prevent injuries or damage to persons or property.

## VIII.TROUBLESHOOTING GUIDE

### Buzz in Audio Equipment

Some inexpensive stereo systems have inadequate internal power-supply filtering and may buzz slightly when powered by the power station. The best solution to eliminate the buzzing is to use an audio system with a good quality filter.

### Television Interference

The Powerstation is shielded to minimize interference with TV signals. If TV signals are weak, you may see interference in the form of lines scrolling across the TV screen. Try one of the following suggestions to minimize or eliminate the interference.

- Use an extension cord to increase the distance between the power station and the TV, antenna, and cables.
- Adjust the orientation of the Powerstation, television, antenna, and cables.
- Maximize TV signal strength by using a better antenna. Use a shielded antenna cable where possible.
- Try a different TV. Different models vary considerably in their susceptibility to interference.

### AC Power Supply Problems

Problem	Possible Cause	Solution
AC product not operating	AC product is drawing more than 200W AC product is rated at less than 200W, but the high starting surge has tripped the safety overload. Battery has discharged to 8.5V±0.3V	Use an AC product with power rating less than 200W Use an AC product with a starting surge within 200W surge rating of the Powerstation Turn the AC outlet off and recharge the Powerstation
Overload shutdown	Appliance power requirements exceed the capability of the Powerstation	Unplug the appliance and confirm that the appliance's power requirement is 200W or less before attempting to restart the appliance.
Overtemperature shutdown	Inverter has overheated due to poor ventilation or excessively warm environmental conditions.	Turn the AC Outlet On/Off switch off and allow Powerstation to cool for 15 minutes or more. Clear blocked fan opening or remove objects covering the unit. Move to a cooler environment.

Alarm sounds (When inverter used)	Internal battery is nearly discharged 10.3V ± 0.3V If you ignore this warning, the power station will automatically shut down when the battery reaches 8.5V ± 0.3V	Recharge the Powerstation
Run time is less than expected	Internal battery was not fully charged AC product power consumption is higher than expected Battery has been damaged	Recharge using the AC charger, until battery status read >12.8V Check AC product power or wattage rating (or current draw for 12V DC appliances) Note: Starting load will affect running time of appliance

### Charging Problems

Problem	Possible Cause	Solution
Charging Status light is off when AC charger is connected	NO AC power at the AC wall outlet AC charger is faulty	Ensure power is available at the AC wall outlet. Replace the AC charger

### **WARNING! ELECTRIC SHOCK HAZARD**

Do not remove the housing or disassemble the Powerstation except to replace the internal battery. The Powerstation does not contain any internal user-serviceable parts and attempting to service the unit yourself could result in electrical shock or burn.

## IX. SERVICE INFORMATION

### HOW TO ORDER REPLACEMENT PARTS

Even quality-built equipment such as the generator you have purchased will need occasional replacement parts to maintain its good condition over the years.

To order replacement parts and consumable parts, please contact Promate Service (details below) and be ready with the following information:

1. Model No., Serial No. and all specifications that are shown on the Model No./Serial No. plate.
2. Part number or numbers as shown in the Parts List section.
3. A brief description of the trouble with the generator.

### LIMITED WARRANTY

Warranty Coverage: Powertech Asia Pacific Inc., (the Company) warrants to the original retail customer that it will repair or replace, free of charge, any parts found by the Company or its authorized service representative to be defective in material or workmanship. This warranty covers the cost of replacement parts and labor for defects in material or workmanship.

#### Not Covered:

- Shipping/Handling charges for sending the product to the Company or its authorized service representative for warranty service. Shipping/Handling repaired or replaced products back to the customer; these charges must be borne by the customer.
- If a separate operator's manual and engine warranty from the engine manufacturer is included with this product, only that warranty will apply to the engine.
- Damage caused by abuse, accident, the effects of corrosion, erosion and normal wear and tear.

- Warranty is void if the customer fails to install, maintain and operate the product in accordance with the instructions and recommendations of the Company set forth in the owner's manual, or if the product is used as rental equipment.
- The Company will not pay for repairs or adjustments to the product, or for any costs of labor performed without the Company's prior authorization.
- Consumable parts such as battery, spark plugs, and air cleaner.

Warranty Period: One (1) year from the date of purchase on products used solely for consumer applications; if a product is used for business or commercial applications, the warranty period will be limited to ninety (90) days from the date of purchase.

For warranty service, the customer must provide dated proof of purchase and must notify the Company within the warranty period.

EXCLUSIONS AND LIMITATIONS: THE COMPANY MAKES NO OTHER WARRANTY OF ANY KIND, EXPRESS OR IMPLIED. IMPLIED WARRANTIES, INCLUDING WARRANTIES OF MERCHANTABILITY AND OF FITNESS FOR A PARTICULAR PURPOSE, ARE HEREBY DISCLAIMED. THE WARRANTY SERVICE DESCRIBED ABOVE IS THE EXCLUSIVE REMEDY UNDER THIS WARRANTY; LIABILITY FOR INCIDENTAL AND CONSEQUENTIAL DAMAGES IS EXCLUDED TO THE EXTENT PERMITTED BY LAW.

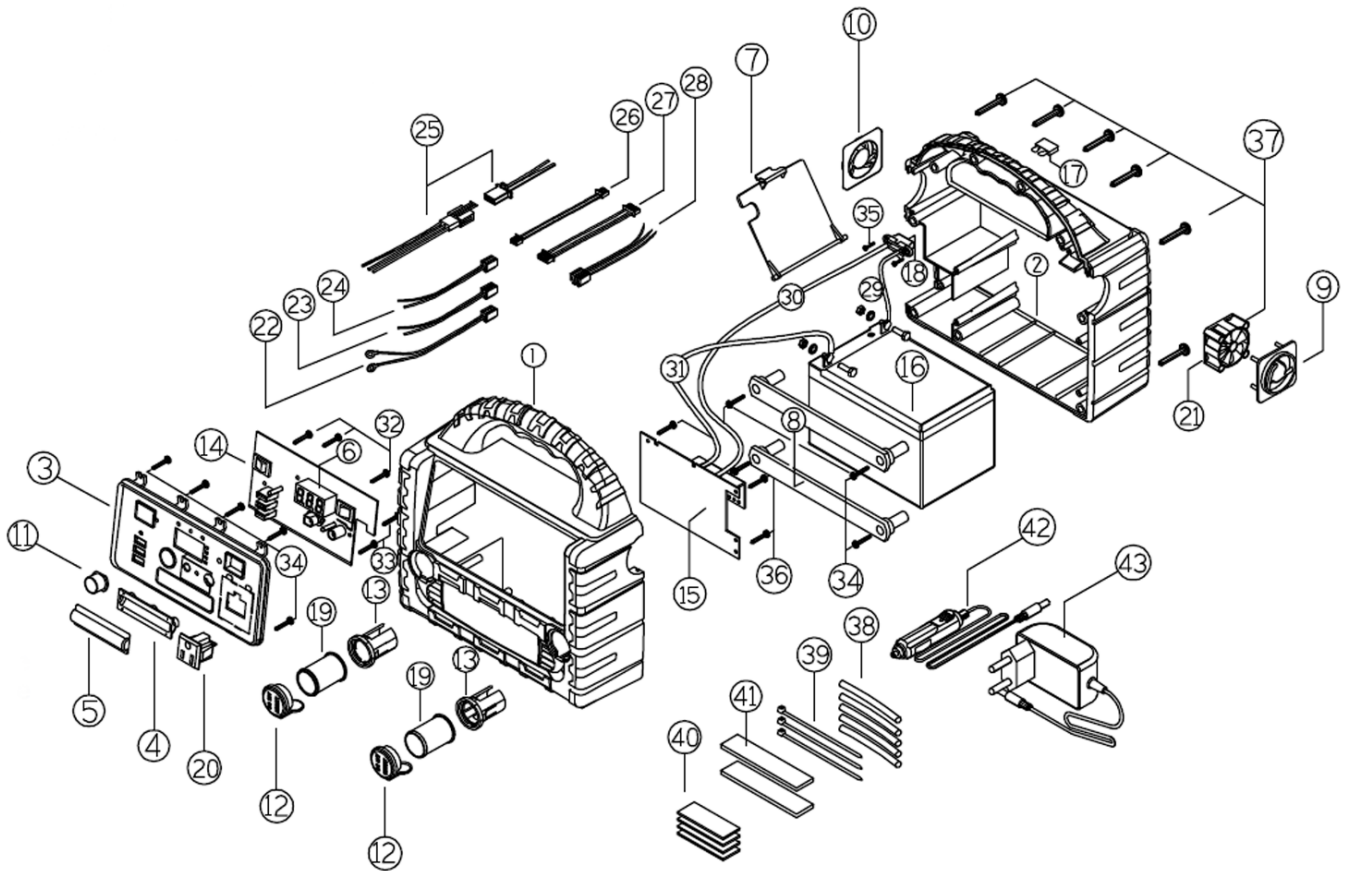
This warranty gives you specific legal rights, and you may also have other rights which vary from state to state. Some states do not allow a disclaimer of implied warranties or the exclusion or limitation of incidental and consequential damages, so the above disclaimers and exclusions may not apply to you.



**CONTACT THE POWERTECH Asia Pacific Inc.,**  
PRODUCT SERVICE DEPARTMENT AT (02) 8 638 1569 | (+63) 9338373922  
service@powertechasiapacific.com www.facebook.com/PromateServicePH/

# Powerstation Exploded View

Model: Promate 120



NO.	DESCRIPTION	NO.	DESCRIPTION
1	Front outer plastic housing	23	No. 1 Cigarette lighter connecting wire
2	Rear outer plastic housing	24	No. 2 cigarette lighter connecting wire
3	Outer control panel	25	2P / 3P pair wiring
4	Reflective cup	26	3P pair wiring
5	LED lens	27	5P pair wiring
6	Nixie tube bracket	28	AC Socket connection wire
7	Side door	29	Fuse connection wire
8	Battery pressing plate	30	Inverter positive line
9	Cooling fan bracket	31	Inverter negative wire
10	Cooling bracket	32	Fixing screw of FCB BA2*8
11	Display button	33	Fixing screw of FCB BA2.3*8
12	Cigarette lighter stopper	34	Fixing screw of panel PWA3*10 D7.5
13	Cigarette lighter fixing cylinder	35	Fixing screw of fuse BA3*10
14	PCB control panel	36	Fixing screw of inverter BA3*12
15	Inverter board	37	Fixing screw of plastic shell BA3*15
16	12VDC Lead Acid Battery 12Ah	38	Heat shrinkable tube D5*15
17	Fuse 25 Amps	39	Cable ties 3*120
18	Fuse base	40	Single sided adhesive 100*25*4
19	Cigarette lighter / 12V DC outlets	41	Double faced adhesive tape 75*40*1
20	AC socket	42	DC charger
21	Cooling Fan	43	AC charger adapter
22	Power cord		